

本試題是否可以使用計算機: 可使用, 不可使用 (請命題老師勾選)

- (1) Draw the influence lines for the bar forces in members ab and bc if the live load is applied to the truss in Fig. 1 through the lower chord. (25%)

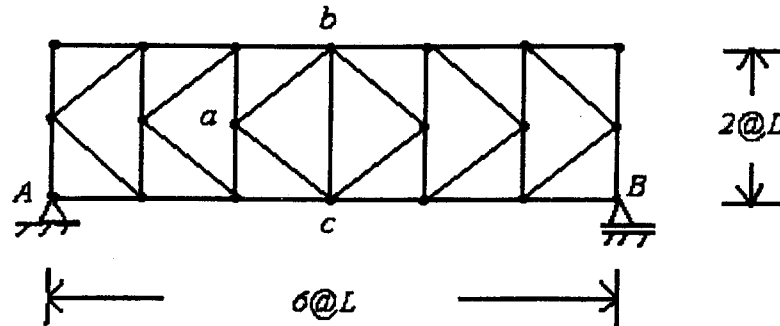


Figure 1

- (2) A compound beam system under a concentrated load P at point B is considered and shown in Fig. 2.
- (a) Determine the spring forces of spring BE and EF . $EI = \text{constant}$ and $k = \text{the spring constant}$. (13%)
- (b) Let $\frac{1}{k} = \frac{L^3}{6EI}$ and determine the vertical displacement of point B . (12%)

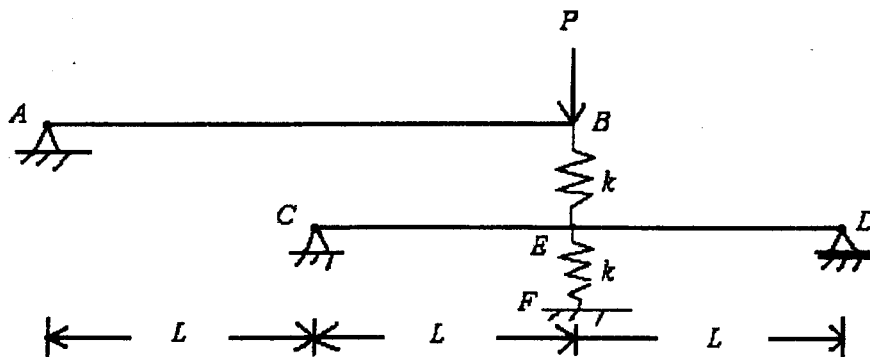


Figure 2

(背面仍有題目, 請繼續作答)

本試題是否可以使用計算機： 可使用， 不可使用（請命題老師勾選）

(3) Determine the end moments of each member of the frame in Fig. 3,

(a) using the method of slope deflection. (13%)

(b) using the method of moment distribution. (12%)

$EI = \text{constant}$.

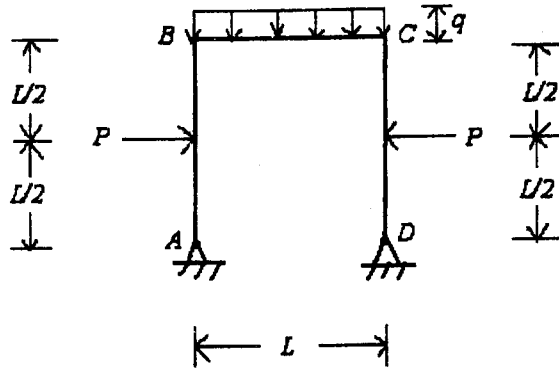


Figure 3

(4) Determine the fixed end moment at point B (i.e., $M_B(x)$) of the statically indeterminate beam in Fig. 4, as a unit load is applied on the beam and moves from point A to point B. The coordinate x is measured from point A and $EI = \text{constant}$. (25%)

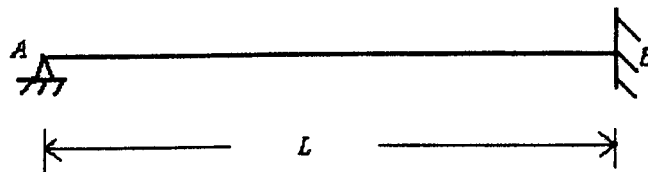


Figure 4