



※ 考生請注意：本試題 可 不可 使用計算機

3. Analyze the circuit in Fig. 3. The transistors are biased by a current source such that the transistors have  $\beta = 100$ ,  $r_x = 5 \text{ k}\Omega$ ,  $g_m = 20 \text{ mA/V}$ ,  $r_o = \infty$ ,  $C_{\mu} = 2 \text{ pF}$ , and  $C_{\pi} = 6 \text{ pF}$  (a) Find the midband gain; (7 分) (b) Find  $f_H$  by using the open-circuit time constant. (8 分)

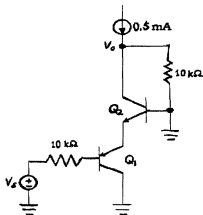


Fig. 3

4. For the diff. amp in Fig. 4, (a) Sketch the differential half-ckt and the common-mode half-ckt. (8 分) (b) Find the differential gain, the differential input resistance, the common-mode gain, and the common-mode input resistance. Assume that  $\beta = 100$ ,  $V_T = 25 \text{ mV}$ , and  $r_o = \infty$ . (12 分)

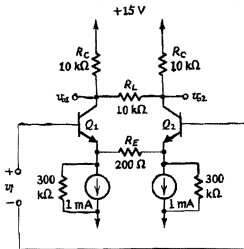


Fig. 4

※ 考生請注意：本試題 可 不可 使用計算機

5. In Fig. 5, the transistors are assumed to have common-emitter current gain  $\beta$ , emitter resistance  $r_e$ , and early voltage  $V_A = \infty$ . Find expressions for  $A_f \equiv v_o/v_s$ ,  $R_{in}$ , and  $R_{out}$ . (20 分)

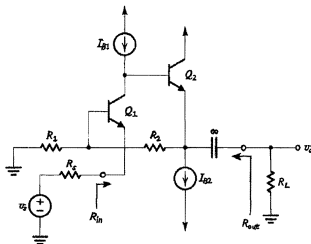


Fig. 5

6. In Fig. 6, an approach realizing the OR function of six input variables is shown. (a) Sketch the CMOS realization for the logic gates in the figure. (6 分) (b) Assuming that the transistors in the circuit are properly sized to provide each gate with a current-driving capability equal to that of the basic matched inverter, find the number of transistors and the total area. Assume that the basic inverter has the  $(W/L)_n$  ratio of  $1.2 \mu\text{m}/0.8 \mu\text{m}$  and the  $(W/L)_p$  ratio of  $3.6 \mu\text{m}/0.8 \mu\text{m}$ . (10 分)

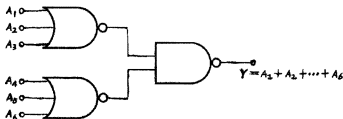


Fig. 6