

國立成功大學

110學年度碩士班招生考試試題

編 號：369

系 所：人工智慧機器人碩士學位學程

科 目：程式設計

日 期：0203

節 次：第 1 節

備 註：不可使用計算機

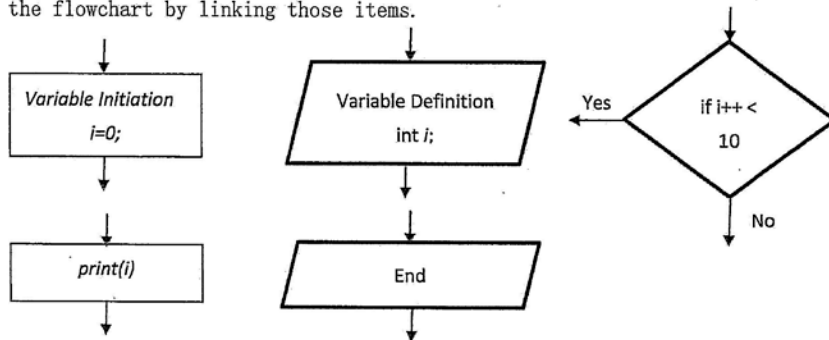
※ 考生請注意：本試題不可使用計算機。請於答案卷(卡)作答，於本試題紙上作答者，不予計分。

1. (20%) Please transfer the decimal to binary.

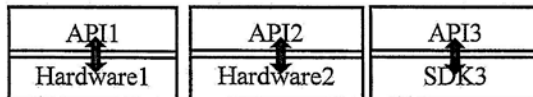
Example: decimal 6 is equal to binary 0000 0110  
So decimal 9 will be equal to what binary? ???? ????

2. (20%) When you run deep learning algorithm using Python programming, which two processing units need to be applied?

3. (20%) Please sort following items in order as writing programming? That is, complete the flowchart by linking those items.



4. (20%) Please briefly describe the relationship between API (Application Programming Interface) and SDK (Software Development Kit)? You can describe by one example.  
3 Examples:



5. (20%) The computer programming is running under different operating systems (OSs), such as iOS, Android, or Windows, corresponding to ARM or CPU. Please briefly describe the difference between ARM and CPU? You can describe by one example.