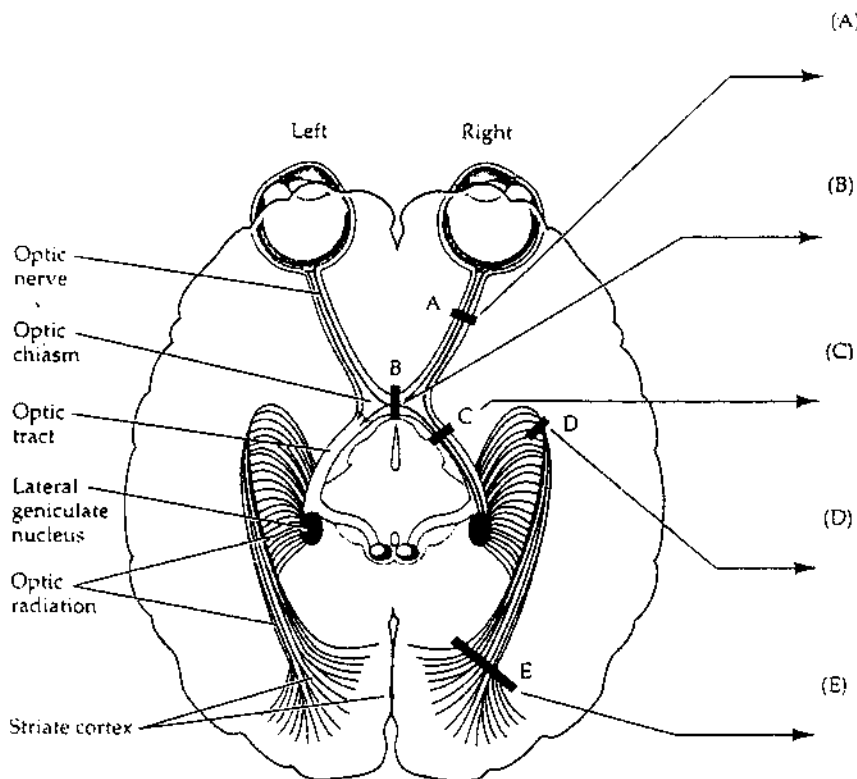


1. List the cranial nerves, their primary functions and their sensory/motor characteristics (25%)
2. Given evident lesion was seen in A, B, C, D, E (as shown below), depict their corresponding visual field deficits (25%)



3. Compare and contrast 2 families of neurotransmitters and/or psychotropic receptors (25%)
4. Describe the neuroanatomical pathway mediating CS (tone), US (corneal air puff), and UR/CR (nictitating membrane closure) in the cerebellum. Even if you have no clue for the afore-mentioned Pavlovian conditioning mostly established by R. Thompson's work, describe the major inputs, internal connections and outputs of cerebellum (25%)