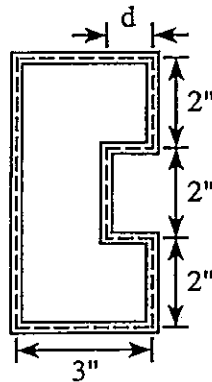


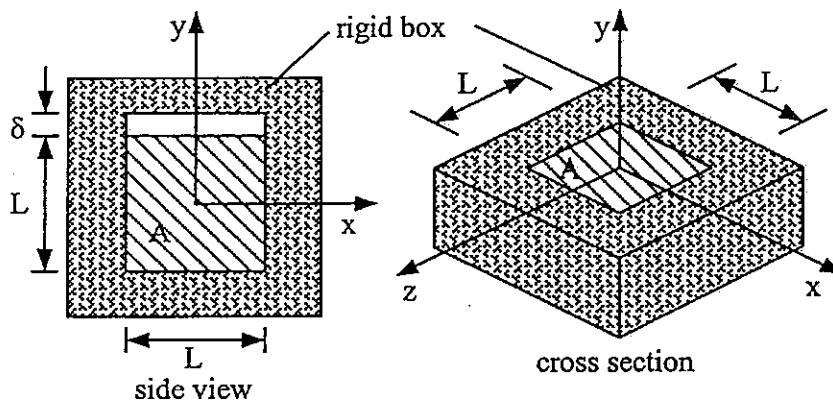
臺灣綜合大學系統 105 學年度學士班轉學生聯合招生考試試題

| | | | |
|--------------------------|------|-------|-------|
| 科目名稱 | 材料力學 | 類組代碼 | D09 |
| | | 科目碼 | D0993 |
| ※本項考試依簡章規定各考科均「不可以」使用計算機 | | 本試題共計 | 2 頁 |

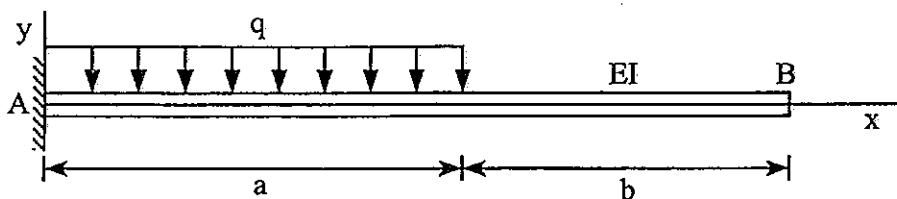
1. A hollow tube of length $L = 4$ ft and thickness $t = 0.1$ in. is subjected to a torque $T = 2400$ lb-in. If $G = 30$ Msi and the shear stress in the tube cannot exceed 750 psi, determine: (i) the largest distance d , and (ii) the associated angle of twist ϕ of the tube. (20%)



2. A material A (modulus of elasticity E , Poisson's ratio ν , thermal expansion coefficient α) of initial dimensions $L \times L \times L$ is confined in a rigid box of inner dimensions $L \times (L + \delta) \times L$. If the temperature of the material is increased by ΔT and $\alpha \Delta T L < \delta$, calculate $\sigma_x, \sigma_y, \sigma_z, \epsilon_x, \epsilon_y, \epsilon_z$ and absolute maximum shear stress τ_{max} in the material. Assume there is no friction between the material and the rigid box. (20%)



3. Use the moment differential equation $EI(x)v(x)'' = M(x)$ to obtain the equations of the deflection curve for a cantilever beam AB carrying a uniform load of intensity q over part of the span ($a + b = L$). Also, determine the deflection δ_B at the end of the beam. (20%)

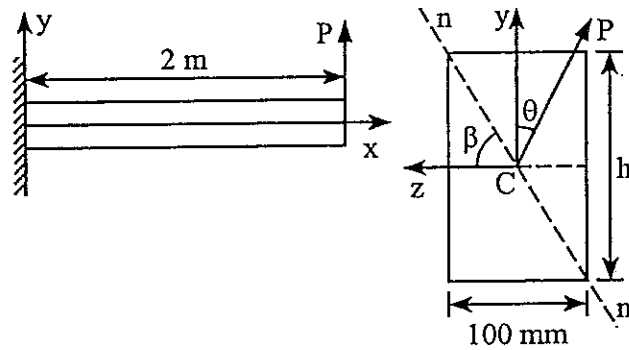


背面有題，請繼續作答。

臺灣綜合大學系統 105 學年度學士班轉學生聯合招生考試試題

| | | | |
|--------------------------|------|-------|-------|
| 科目名稱 | 材料力學 | 類組代碼 | D09 |
| | | 科目碼 | D0993 |
| ※本項考試依簡章規定各考科均「不可以」使用計算機 | | 本試題共計 | 2 頁 |

4. A cantilever beam supports an inclined load P at its free end. It is known that the neutral axis $n-n$ lie along a diagonal of the cross section and the load P is perpendicular to the neutral axis. (i) Determine the height h of the beam. (ii) If the maximum normal stress in the beam cannot exceed 8 MPa, find the largest load of P that can be applied to the beam. (20%)



5. What are the critical buckling loads P_{cr} for the following columns. Assume all columns have the same EI . (20%) (You are not supposed to carry out a lot of calculations)

